

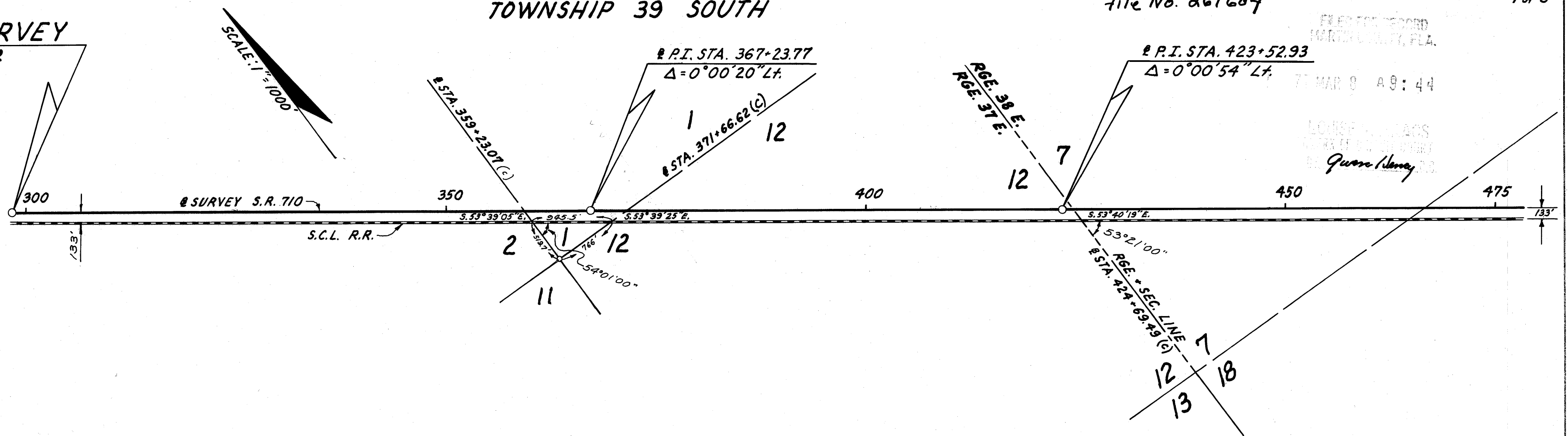
BEGIN SURVEY

STA. 298+38.42

TOWNSHIP 39 SOUTH

File No. 267604

1 of 3



I, Billy G. Pelham, as Director of Administration of the State of Florida Department of Transportation, do hereby certify that this map is the Official Map of Location and Survey of a portion of Section 89070 designated as a part of State Road 710 in Martin County, Florida. Said portion of Section 89070 extending from a point in Section 2, Township 39 South, Range 37 East southeasterly to a point in Section 6, Township 40 South, Range 39 East.

Prepared and adopted by the State of Florida Department of Transportation under provisions of Section 335.02, Florida Statutes of 1955.

Filed for record in the Office of the Clerk of the Circuit Court for the County of Martin, State of Florida, in Map Book 7, Page 12, on the 8th day of March, A.D. 1977.

Billy G. Pelham
 Director of Administration
 State of Florida Department of Transportation

Attest: Carol Scavali
 Executive Secretary

Approved: H. E. Medel
 Engineer of Rights of Way
 Date: 2-16-77

Louise V. Spence
 By: Queen Henry, Deputy Clerk
 Clerk of the Circuit Court
 Martin County, Florida